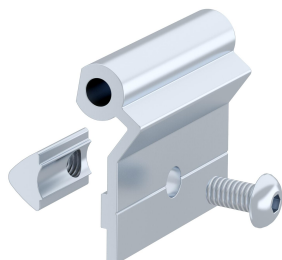


Technical data sheet

Hinge

Item number: 6115022



3 hinge elements incl. fastening screws for the creation of hinge fastenings between covers and bases of the Rapid IBIS breastwork trunking system.

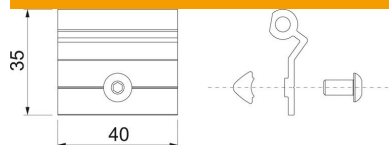


Alu Aluminium

Master data

Item number	6115022
Type	GAI-SR
Description 1	Hinge
Description 2	IBIS, with accessories
Manufacturer	OBO
Dimension	40x35x2mm
Material	Aluminium
Smallest sales unit	2
Unit of quantity	Piece
Weight	1.02 kg
Weight unit	kg/100 pc.

Dimensions



Length	40 mm
Width	35 mm
Height	2 mm